

## I Gotta Feeling

iPAD APP: Tempo Slow ("temposlowmo" in app store!)

Chords: G, C, Em, C

x8 Strums

e	-----	-----	-----	-----
b	3-3-3-3-1-1-0-0-	-1-1-1-1-1-1-1-1-	-0-0-0-0-0-0-0-0-	-1-1-1-1-1-1-1-1-
g	0-0-0-0-0-0-0-0-	-0-0-0-0-0-0-0-0-	-0-0-0-0-0-0-0-0-	-0-0-0-0-0-0-0-0-
d	-----	-----	-----	-----
A	-----	-----	-----	-----
E	-----	-----	-----	-----

## Back In Black

Chords:

E, D, A, Lick 1

E, D, A, Lick 2 (you can either play 2nd fret on A string as written below or 7th on E string)

	E	D	A		R
e	-----	-----	-----	-----	3-0-----
B	-----	3-3-3	-----	-----	-----3-0-----
G	-----	2-2-2	2-2	2-----	-----3/--2p0-----
D	-2-----	0-0-0	2-2	2-----	-----
A	-2-----	-----	0-0	0-----	-----
E	-0-----	-----	-----	-----	-----

	E	D	A		
e	-----	-----	-----	-----	-----
B	-----	3-3-3	-----	-----	-----
G	-----	2-2-2	2-2	2-----	-----0
D	-2-----	0-0-0	2-2	2-----	-----0
A	-2-----	-----	0-0	0-2-----	2-----2-----
E	-0-----	-----	-----	4.-----	5.-----6.-----7/--

## Can't Stop - Red Hot Chili Peppers

Practice this piece at a comfortable speed or along to the "tempo slow" app.

Chorus Chords: G, D, Bm, C

### Intro

E  
B  
G  
D  
A 5h7 5h7 5h7 5h7 5h7  
E

### Riff

E  
B  
G 7 9 7 9 7 9 7 9  
D 0 0 0 0 0 0  
A 7 7 7 7 7 7  
E

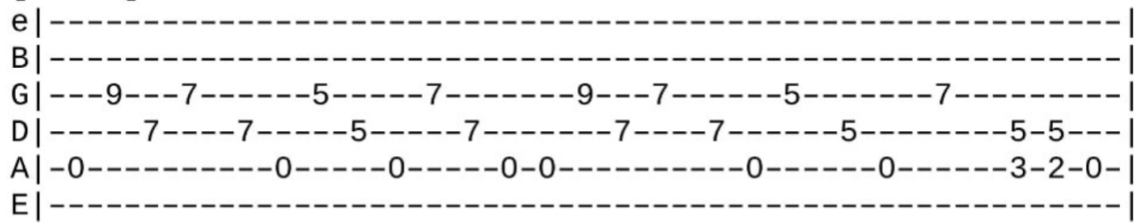
E  
B  
G 7 9 7 9 7 9 7 9  
D  
A  
E 7 7 7 7 8 8 8 8

### Solo

E 12/12 10/10 7/7 3 12/14 12 10/ 12 10 7 /10 /5 3  
B  
G  
D  
A  
E

# Hells Bells - AC/DC

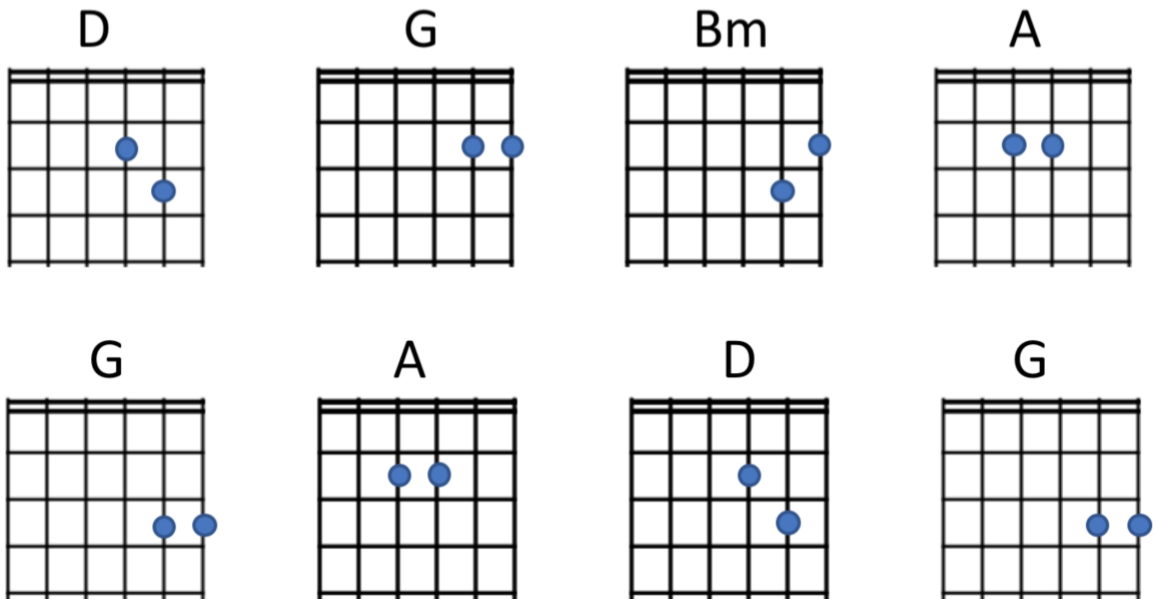
## [Intro]



```
e|-----|
B|-----|
G|--9--7--5--7--9--7--5--7--|
D|--7--7--5--7--7--7--5--5--|
A|-0-----0--0--0-0-----0--0--3-2-0-|
E|-----|
```

# Castle On The Hill

Verse/Chorus Chords: D, G, Bm, A  
Pre Chorus: G, A, D, G



D

G

Bm

A

G

A

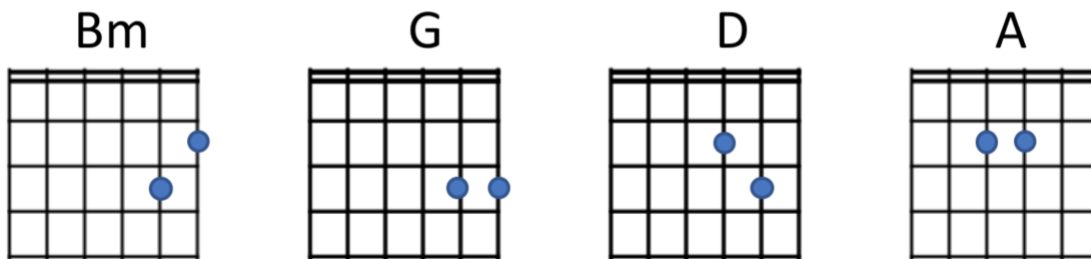
D

G

Despacito - Justin Bieber

Chords: Bm, G, D, A

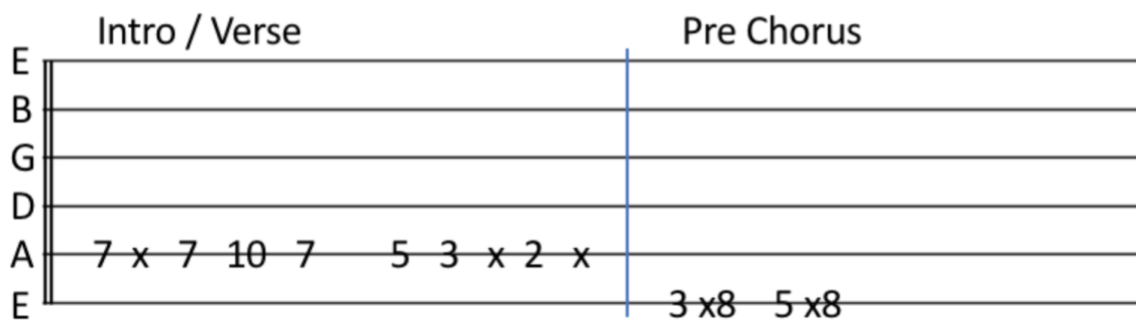
A two finger version whilst your finger is broken!



Seven Nation Army - White Stripes

Repeat intro 4 times and verse 8 times before the pre chorus.

x = tap the guitar x8 = play 8 times

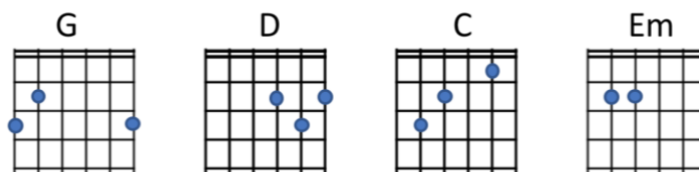


Yellow - Coldplay

Capo 4th Fret

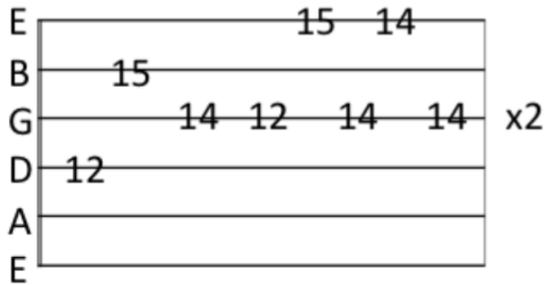
Verse: G, D, C (x8 on each chord)

Chorus: C (x4), Em (x2), D (x2)

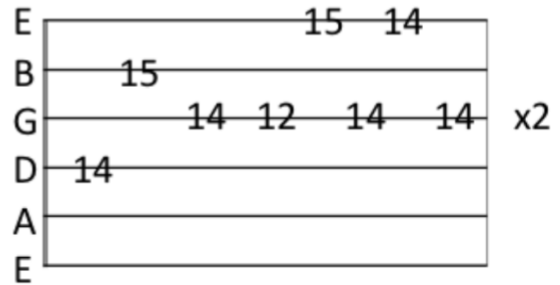


Sweet Child O Mine

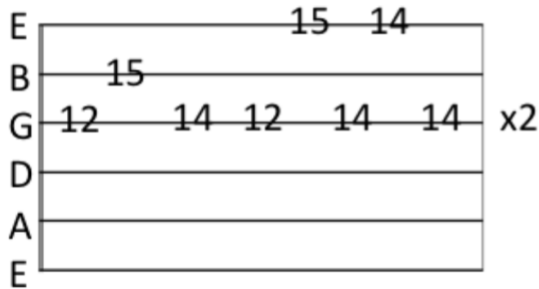
Part 1



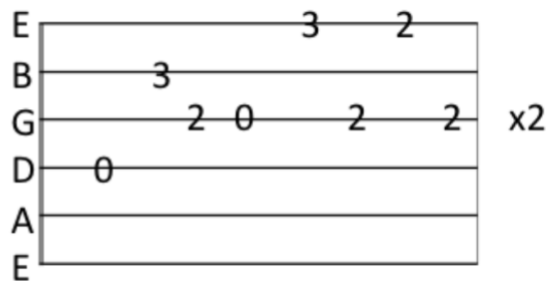
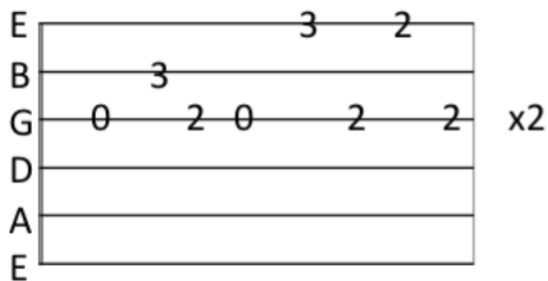
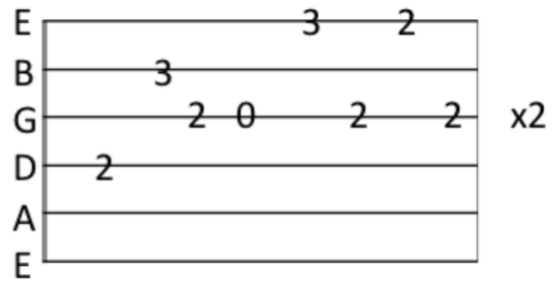
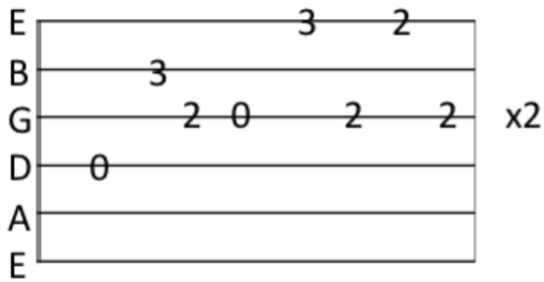
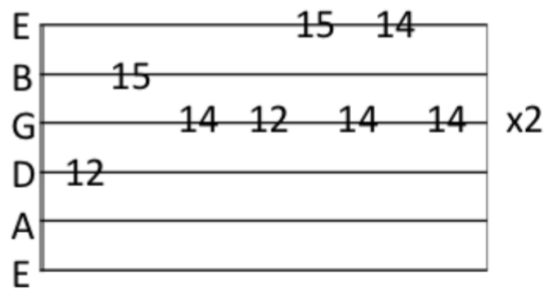
Part 2



Part 3



Part 4

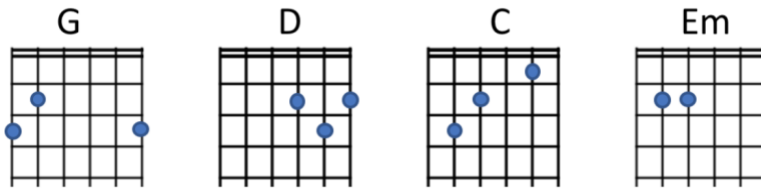


# Yellow - Coldplay

Capo 4th Fret

Verse: G, D, C (x8 on each chord)

Chorus: C (x4), Em (x2), D (x2)



## James Bond Theme Tune

Good song to practice with a plectrum!

